

**WELCOME TO THE PARISH NEWS FOR ST LUKE'S CHURCH
SUNDAY 18th JANUARY 2026**



Dear Friends,

Happy new year to you all!

I read in the news this week that more young people are responding to a renewed call to spirituality, with a noticeable rise in interest in faith and prayer across the country. This has been reflected in a significant increase in Bible sales, suggesting a growing desire to explore Scripture and deepen understanding of God's word. It is an encouraging sign of hope, reminding us of the Holy Spirit at work among the younger generation and inviting us as a church to continue offering welcome, guidance and prayer. Please pray for all our young people as they seek faith, meaning and God's love in their lives.

*Loving God, we pray for young people who are seeking truth, hope and purpose. Draw them closer to you, guide them by your Spirit, and help them to know the love of Christ in their hearts and lives.
Amen.*

Love and prayers,

Sara

Worship

Family Communion

Looking Up & Stepping Up in Faith"

A journey through the life of Abraham (Genesis 12-22)

Week 2 - "Stepping Up in the Face of Fear"

Genesis 15:1-6

John 1:29-42

Sunday 18th January

9.30 Informal Service

Leader Revd. Jane Michell & Speaker Revd. Canon Michael Christian Edwards

11am Family Communion

Leader Revd. Jane Michell & Speaker Revd. Canon Michael Christian Edwards

4pm Evensong

Leader Ian Burnham

11am Coffee in the Church - thank you to our coffee team this week Kathy, Janet and Ken

Thursday morning online prayers

A reflection on the bible passage for the coming Sunday and prayers using the church monthly prayer guide for the Parish.

[CLICK HERE to join online prayers](#)

CLICK HERE to see all of January 2026 Worship

Paper copies for all services are available at the back of church.



Prayers

The Second Sunday of Epiphany

*Almighty God,
in Christ you make all things new:
transform the poverty of our nature by the riches of your grace,
and in the renewal of our lives
make known your heavenly glory;
through Jesus Christ your Son our Lord,
who is alive and reigns with you,
in the unity of the Holy Spirit,
one God, now and for ever.*

Please pray for;

Claire Davies and family on the passing of her mum Linda Jones

Gillian Colsell

Lydia and family

Bev - our CMS Missionary

Gillian Anderson's family and friends

Anne Johnson

This week from our monthly prayer diary (copies available in church)

Wider Deanery:

We pray for the Area and Assistant Dean, for the clergy and PCC's of all the different churches in the Lyndhurst Deanery. We pray blessing on working together and mutual support in ministry and mission. We pray for those who serve on Deanery Synod and for the particular needs of this part of the New Forest.

Church News

Gillian Anderson

Gillian a much loved member of St Luke's Church family died peacefully on Sunday 3rd January in her home in Sway Place. Gillian sang in the choir, was a member of a home group and fully involved in church life over many years. For all who grieve we pray for God's peace and comfort and give thanks knowing that Gillian is in glory and safely in the Lord's arms. The Thanksgiving Service for Gillian is provisionally booked for Friday 27th February to allow for family members abroad to attend, and will be confirmed shortly.

Death and Life course begins 10th February, 2pm–3.30pm (6 weeks)

This is a gentle, practical six-week course on preparing for the end of life. It's a sensitive topic, but an important one. As Christians, we hold to the hope of the gospel and can face these conversations with honesty and without fear, supporting one another with compassion. Each week we will welcome a different speaker to guide us through key aspects of end-of-life planning, including:

- A solicitor – making a will and setting up powers of attorney
- A local funeral director – understanding the role of an undertaker
- A GP – how to approach difficult but important conversations with family and friends
- A hospice representative – insight into hospice care and support
- Vicar Jane – planning an order of service that reflects your wishes

The course will take place in church, with tea and cakes served each week. Invite friends or come along for information and a way of supporting others facing end of life.

All are welcome. **Please sign up at the back of church.**

Creative Space Friday 30th January 2-4pm



Join us for a creative space session exploring prophetic colours in the Bible and Christian art. We will reflect on how colours communicate God's character, promises, and purposes, from white symbolising holiness and resurrection, to red expressing sacrifice, covenant, and love. Blue will be explored as a sign of heaven, revelation, and obedience, while purple points to royalty, authority, and suffering kingship. Drawing on biblical passages, icons, stained glass, and Renaissance paintings, participants will engage in guided discussion, visual meditation, and gentle art-making to discern how colour can become a prophetic language for prayer, imagination, and faithful response today together.

[CLICK HERE to sign up](#)

If you would like to be on our Creative Space invitation list then please let Sara in the office know on 01590 682358 or at sarawillis@swaychurch.com. This will ensure you receive all creative space invitations and will not miss out on any future events.

Please note that Creative Space on Friday 27th Feb has now been moved to Friday 20th Feb due to the church being used for a funeral.

A message from Anne Johnson's family

After a spell in hospital over Christmas Anne is back at Linden House Lymington and thankfully feeling better. Anne would welcome visits from long standing friends. Vicar Jane and the pastoral team are visiting and keeping Anne up to date with St Luke's Church family news.

Joe Scott - with heartfelt thanks for all that you have done

From the Church Family and especially the gardening team, we want to send **a big thank you** to Joe Scott. After many years of stirring work in the church garden and churchyard, especially the

last few years mowing the lawn, he has decided to retire. We are most grateful for all he has done and send best wishes to him and Mary for 2026. Joe we will miss you. Thank you!

Christmas Tree Festival 2025 - thank you all!

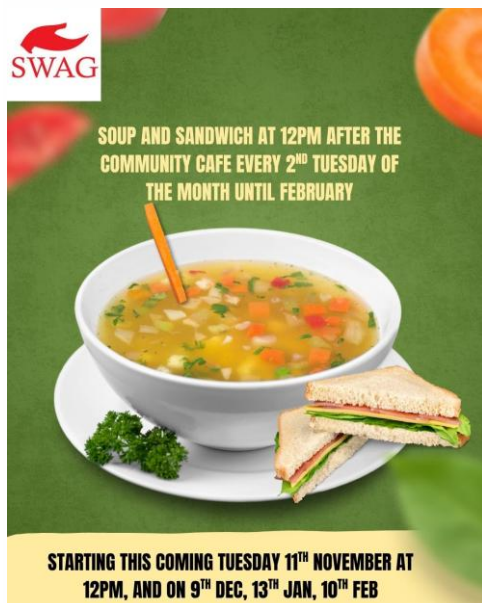
We would like to extend our sincere and heartfelt thanks to **Janet Kirk** for all the time, care, and effort she put into organising the Christmas Tree Festival. Her dedication and hard work made the event such a wonderful success. Thank you so much Janet.

We are also incredibly grateful to everyone who attended, supported the festival, and so generously made a donation. Thanks to your kindness, a total of **£752** was raised.

This amount has been shared between **Oakhaven Hospice** and the **Ministry of St Luke's Church**, helping to support the vital work they do.

Thank you all for making the festival such a meaningful and uplifting occasion.

SWAG Soup & Sandwich - Next date is Tuesday 10th February at 12pm



SWAG Community Cafe are offering a soup and sandwich lunch from 12pm. This will be offered after the Community Cafe on the 2nd Tuesday of the month running through until February. The next date is **10th February**. We hope to see you there.

Urgent Prayer Requests

If you, or someone you know is in need of urgent prayer then please contact Jane on 07885505532 or the church office on 01590 682358, or if you are unable to make contact with Jane or the office then please email Jennie McNaught on mcnaughthome@protonmail.com.

Vacancy for Anna Chaplain at St Thomas' Church, Lymington

We are seeking to appoint a lay or ordained person to be our Anna Chaplain to develop and support our ministry for older members of our parish. Further details may be found on our website www.lymingtonchurch.org under Vacancies. For the information pack and application form please contact office@lymingtonchurch.org The closing date for applications is 29th January 2026.

Key Holder Needed – Sway Youth Centre

We're looking for a friendly, reliable person living in Sway to act as an on-call key holder for Sway Youth Centre. There are no set hours and call-outs are expected to be very occasional. You might be contacted if an alarm is sounding, a door has been left open, lights are on, or a hall user is having difficulty getting in.

We offer a small payment in return for being available when needed. This role may suit someone who is retired, local, and out and about, but anyone community-minded is welcome.

For more information or an informal chat, please contact:

Katie Walding - Parish Clerk

Tel: 01590 718116

Children and Families

st luke's church - sway

Messy Church

3.30pm Church Rooms

Monday 12th January	Monday 6th July
Monday 9th February	Monday 14th September
Monday 9th March	August Summer Break
Monday 13th April	Monday 12th October
Monday 11th May	Monday 9th November
Monday 8th June	Sunday 13th December

Craft, activities, stories and songs and tea for primary aged children

st luke's church - sway

MONDAY AND FRIDAY

9.30am - 11am

BUMP, BABY AND TODDLER GROUP

Refreshments, Fun & Friendship

St Luke's Church Rooms. Term time only. £1 suggested donation.

st luke's church - sway

Toddler groups are back in full swing - Mondays and Fridays 9.30-11am. All welcome. Two of our helpers are expecting babies soon and we are looking for extra help (min once a month) to make tea and help in the kitchen. Could you help and support this growing community? Please contact Lizzy Smith via the church office to offer to help and go on the rota.

Bubble Church The PCC are considering launching Bubble Church aimed specifically at under 7's and their families once a month every 2nd Sunday at 9.30am in Church at Easter. Bubble church is a fully fledged worship experience in itself and not a stepping stone to join other

Sunday services. It is aimed at helping children and families to grow in faith, it is held in church and is 25-30 mins long. There is a training day on 17th March by the national Bubble Church organisation and Lizzy is putting together a team interested in going and finding out more. Contact Lizzy via the church office to know more and volunteer to explore this exciting new venture for St Luke's.

The next Messy Church is Monday 9th February at 3.30pm!

Training News

Lizzy Smith has completed her BCM in Youth and families work. Congratulations Lizzy!

Sue Cornwell is in her second term of a year long preaching course. (Durham University)

Ellie John is in her second term of a 2 year long Licenced Lay Workers course (Durham University) Ellie has a local learning group in St Luke's arranged for 16th January at 11.30am held in church. If you would like to come along and be part of that learning group sharing different views on topics that help her for essay writing and reflections - you are welcome. Please let Ellie know via the church office. Thank you!

Debbie Hull is doing the BCM Church Without Walls course this term.

Peter Blick is applying for the Preaching course starting in September.

Jane is attending the Winchester biannual clergy conference next week 12-14th January.

Please pray for all those in training and if you feel called - have a chat with Jane about possible courses available to support and encourage you.

Mission News

Greetings from Our African Links

As we begin this new year, we are delighted to share news from our friends and partners in East Africa.

A New Year Greeting from Kibirizi, Rwanda

Pastor Vianney, from our link parish in Kibirizi, sends his warm greetings and gratitude for the prayers and good wishes we shared with him and his community.

Pastor Vianney's Letter

Here in Kibirizi Parish, during the Christmas and New Year's services, many people came to worship. Just yesterday, we baptized 20 new believers and welcomed 6 others who joined our church from other denominations (Catholic and ADEPR [Pentecostal]).

I continue to wish you blessings and peace that come from God in all seasons. May the Lord strengthen you, your families, and the whole church of Sway.

When you gather, please greet them on our behalf and let them know that we are wishing them to continue being loved by God, to walk with Him in everything, and to receive many blessings in this new year. Amen.

I also wanted to share with you some photos of the Sunday school children who came to church today. We wish them a Merry Christmas and a Happy New Year. We shared with them what we had prepared, and it was wonderful — they were very happy.

*With love,
Pastor Vianney*



News from Kisiizi Hospital, Uganda

Shortly after our last Parish News went to print, we received the latest newsletter from Kisiizi Hospital in Uganda. You can read it here by clicking the link below.

Kisiizi Hospital Newsletter_December 2025

We are very much looking forward to welcoming **Dr Ian Spillman**, former Medical Superintendent at Kisiizi, to St Luke's on **Sunday 8th March**. After the morning service, we will share a **Lent Lunch** and hear more about the hospital's inspiring and life-giving work.

Jonathan Elliott-Jones

Dates for the Diary Next Week:

Monday 19th January	9.30am Baby Bump and and Toddler
Tuesday 20th January	10.30am SWAG Cafe

Wednesday 21st January	12pm SWAG Lunch Club
Thursday 22nd January	7pm Band Practise
Friday 23rd January	9.30am Baby Bump and Toddler

Future Dates:

Sunday 25th January	9.30am Informal Service 11am Morning Service
Monday 26th January	9.30am Baby Bump and Toddler
Tuesday 27th January	10.30am SWAG Cafe 7pm PCC Meeting
Wednesday 28th January	2.30pm Christian Meditation
Thursday 29th January	1.30pm SWAG Afternoon Club 7pm Band Practise
Friday 30th January	9.30am Baby Bump and Toddler 2pm Creative Space
Saturday 31st January	
Sunday 1st February January	9.30am Informal Service 11am Parish Communion

Please check the website or churchsuite for all other events and dates.

Contact Information

VICAR: REVD JANE MITCHELL (Rest day: Friday) vicar@swaychurch.com | 07885 505532
OFFICE ADMINISTRATOR: SARA WILLIS office@swaychurch.com | 01590 682358
Family and Community Support Worker: Lizzy Smith - Wednesday mornings 01590 682358